

2803/204

**PATTERN CONSTRUCTION II AND  
PATTERN GRADING TECHNIQUES I  
PRACTICAL**

Oct./Nov. 2015

Time: 4 hours



**THE KENYA NATIONAL EXAMINATIONS COUNCIL**

**DIPLOMA IN FASHION DESIGN AND CLOTHING TECHNOLOGY  
MODULE II**

**PATTERN CONSTRUCTION II AND PATTERN GRADING TECHNIQUES I PRACTICAL**

**4 hours**

**INSTRUCTIONS TO CANDIDATES**

- (i)  $\frac{1}{4}$  scale ruler/ square;
- (ii) pencil (2H);
- (iii) rubber/eraser;
- (iv) 30 cm ruler;
- (v) French curves;
- (vi) office glue/glue stick;
- (vii) sheets of white plain paper (size A4) - (preferably photocopying paper);
- (viii) tracing paper;
- (ix) paper scissors;
- (x) paper pins.

All stages of pattern development must be clearly shown.  
Indicate the measurements used for grading at all grading points.

**This paper consists of 6 printed pages.**

**Candidates should check the question paper to ascertain that all the pages are printed as indicated and that no questions are missing.**

## TASKS

1. Using the measurements provided, draft the classic tailored trouser blocks.

### Measurements in cm

Waist	76 cm
Hips	100 cm
Waist to hip	21 cm
Bodyrise	29.4 cm
Full length	104 cm
Bottom width	24 cm

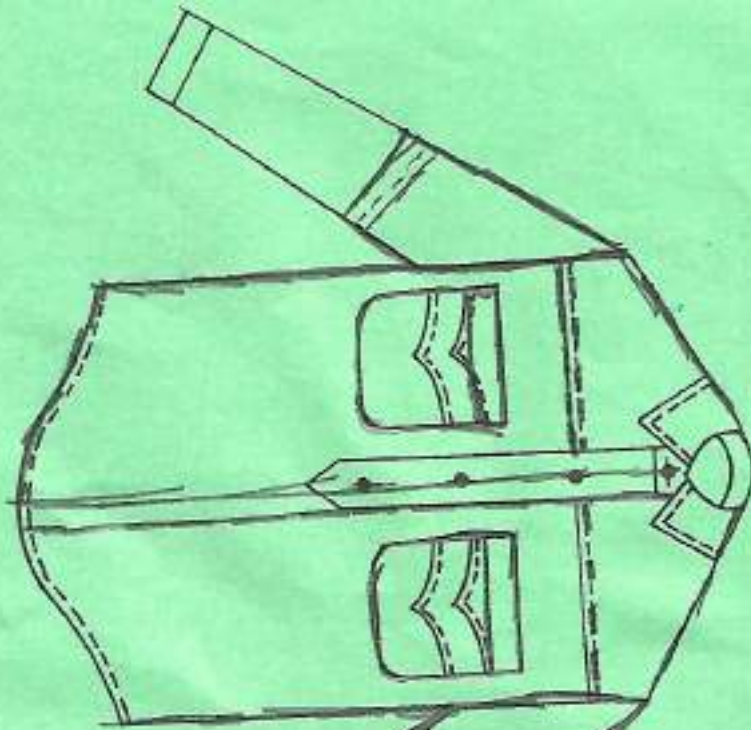
2. Trace out the sleeve and casual shirt blocks provided and develop final patterns for the shirt style sketched on page 3.

<b>NB:</b> Back tuck width	- 2.5 cm	Cuff depth	- 5 cm
Neck size	- 36 cm	Cuff size	- 24 cm
Sleeve length	- 69 cm		

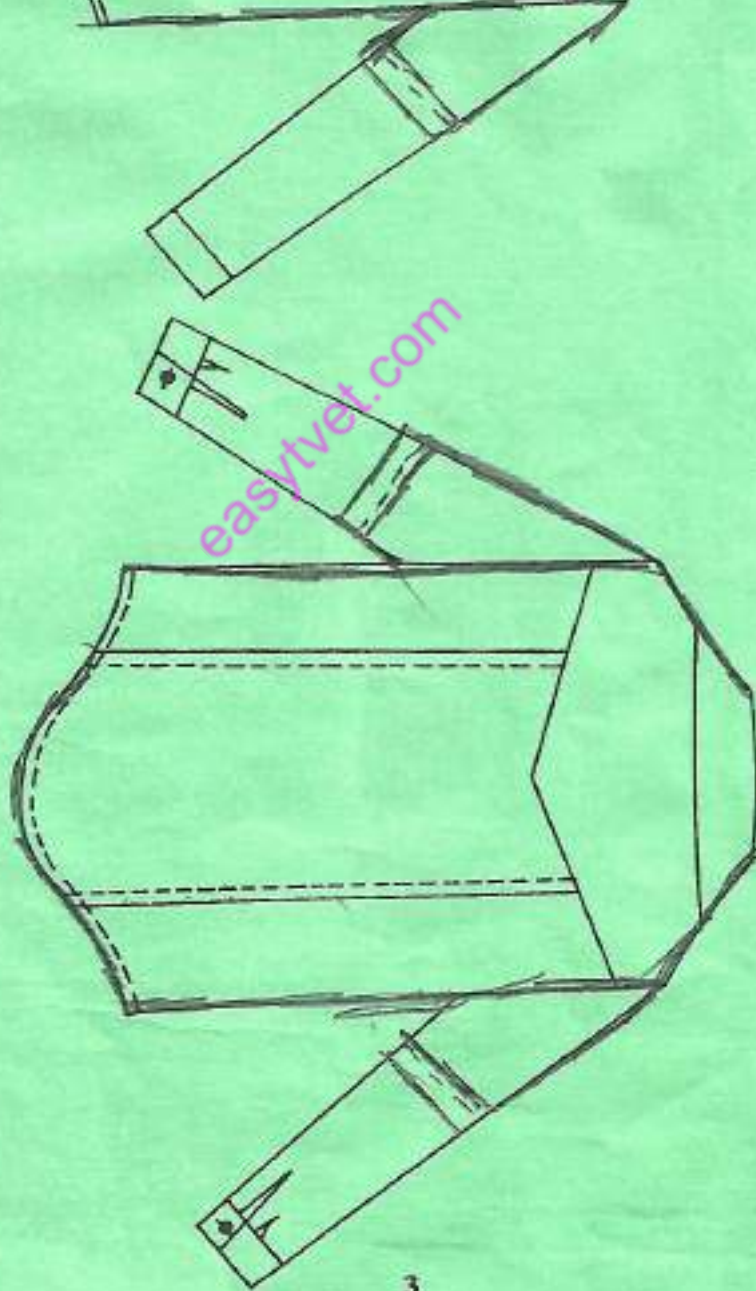
3. Trace out the flat kimono block and grade one size up.

easytvvet.com

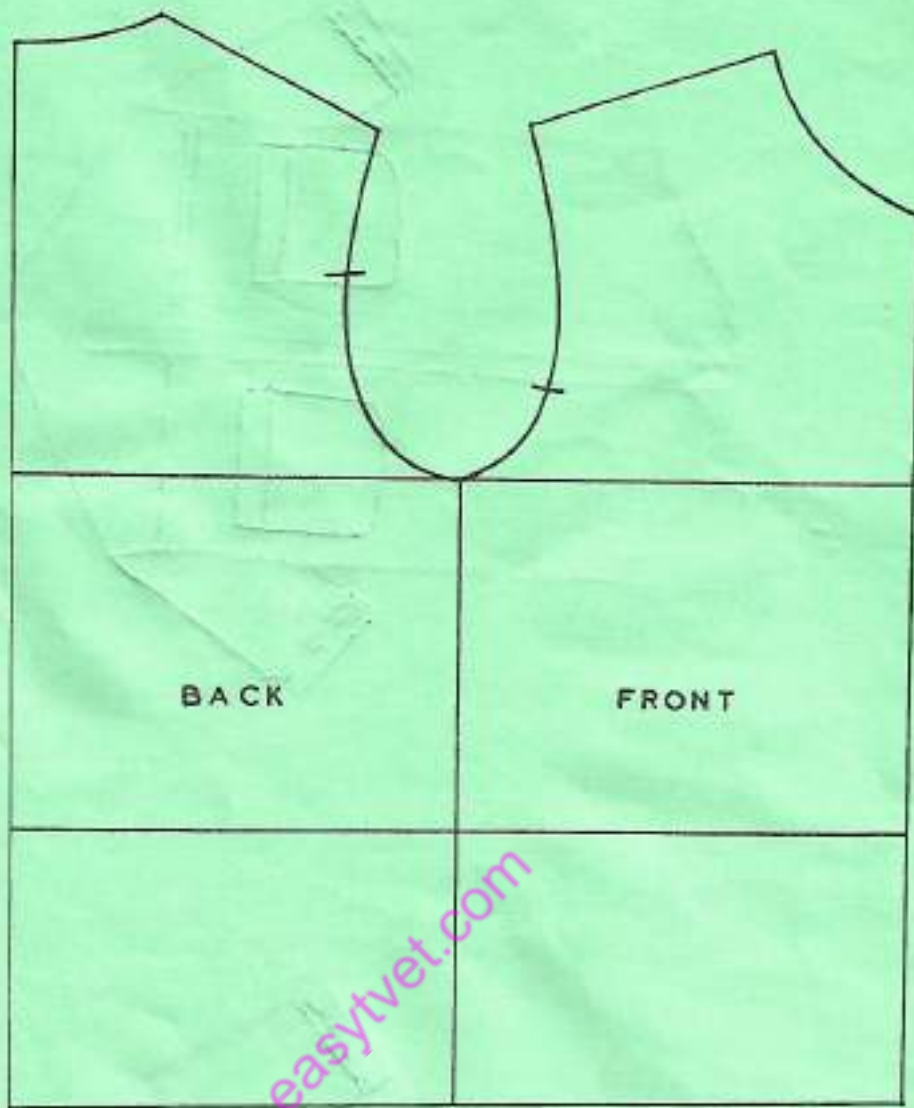
FRONT VIEW



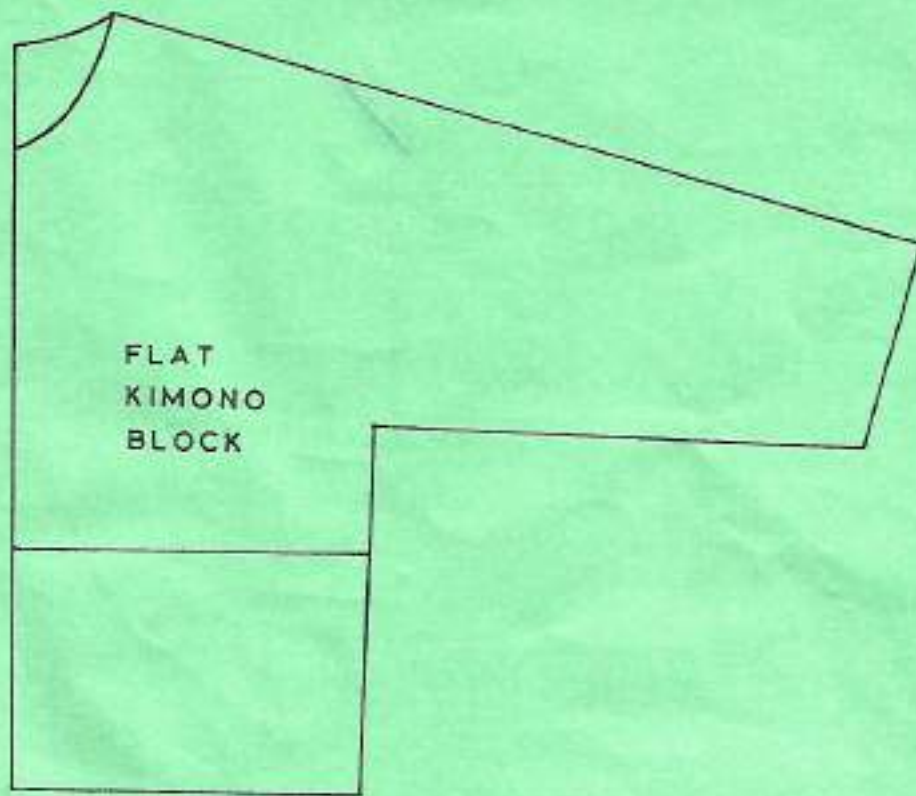
BACK VIEW



# CASUAL SHIRT BLOCKS







**THIS IS THE LAST PRINTED PAGE.**

*easytvvet.com*